



Morrell Place

395 Pye Green Road
Hednesford, Cannock.



Supported Living with
Arreta Care



Reg No. 1-7720997860



Welcome to Morrell Place

Our Mission

'To enable you to live a consistent, happy, safe and independent life in a homely environment.

Morrell Place opened 7 years ago and has recently been upgraded to a spacious wheelchair accessible 5 bed supported living home for adults with learning disabilities.

It offers an individual, person centered approach, enabling an independent, safe and inclusive lifestyle in a relaxed homely environment.

The Conservatory opens directly to an impressive accessible landscaped rear garden containing vegetables, raised planters with sensory features



Morrell Place is situated in a prime location. It has many amenities within 100 metres to promote tenant independence. These include:

Shops Pharmacy Computer Store
Hairdressers Beauticians Butcher

A newly refurbished park and special needs activity company are situated close to the house and Cannock Leisure Centre and swimming pool is nearby.

Other nearby amenities include:

Doctors Surgery 1/3 mile

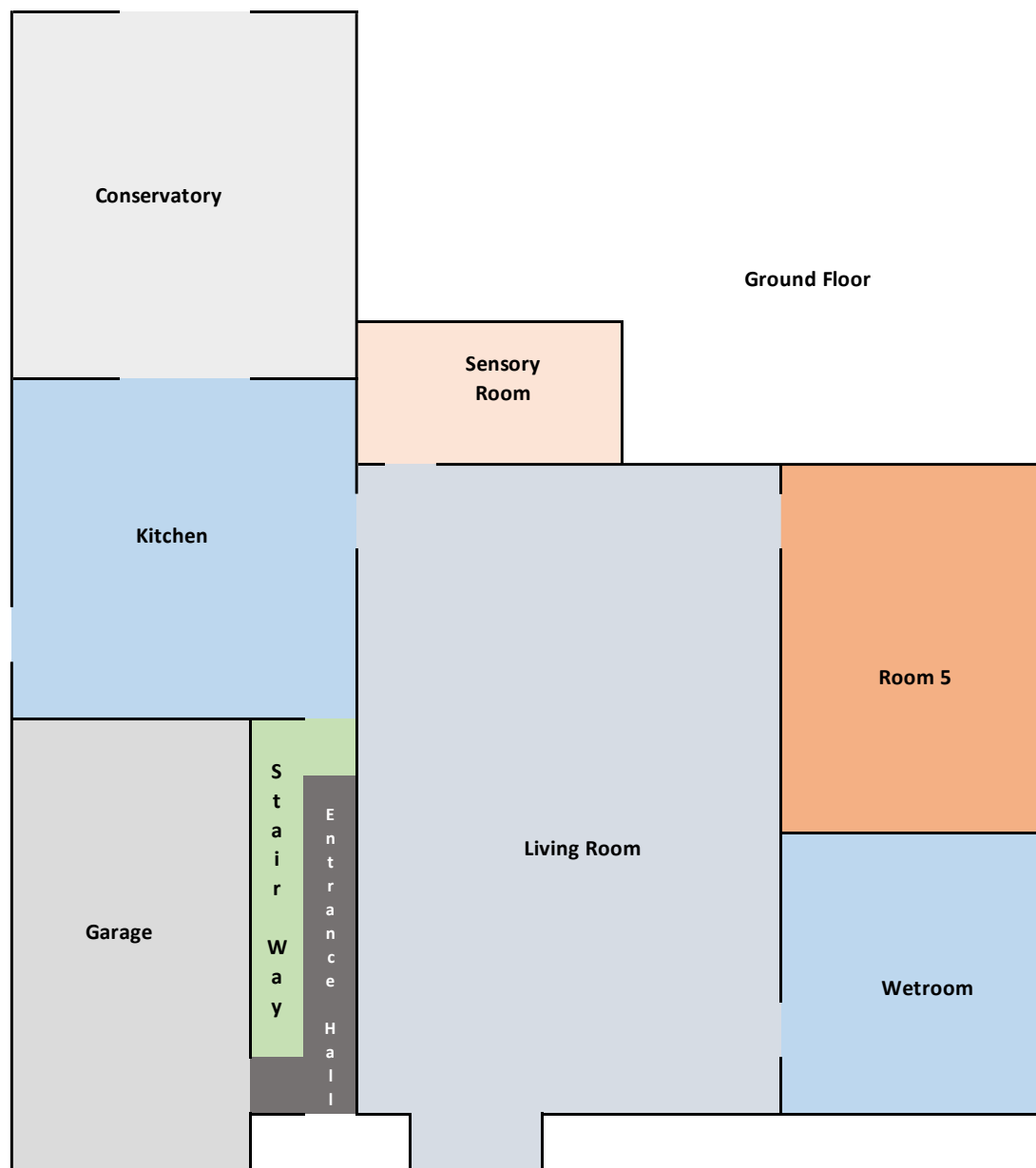
Cannock Hospital 1 mile

Bus Stop 50 metres away the house

Hednesford Train Station 1 mile

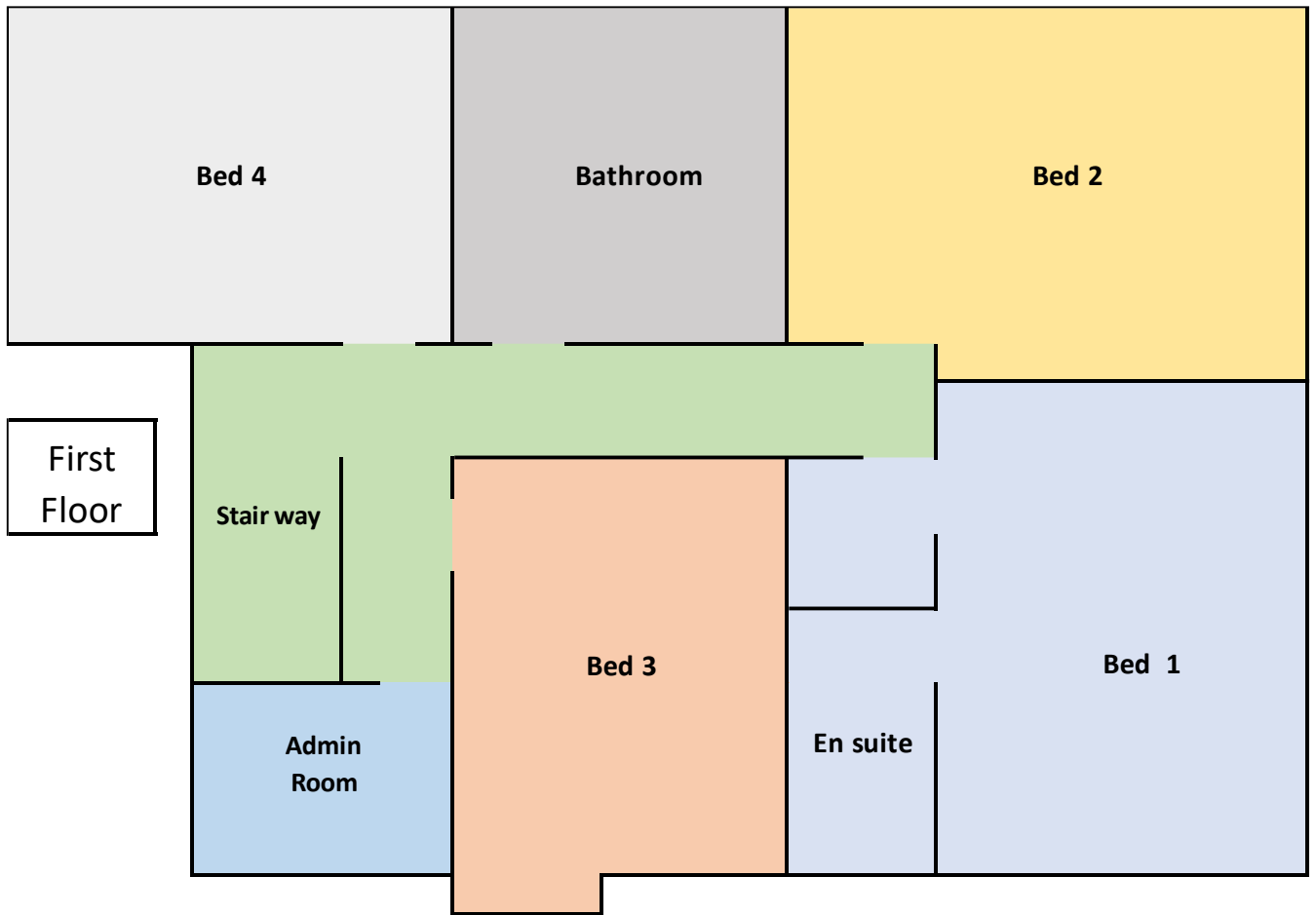


Take a look inside Morrell Place



The ground floor has full wheelchair access to the house and its feature pool and gardens, it also benefits from:-

- Single Ground floor bedrooms
- Communal wet-room 20m²
- Large Living Room 80m²
- Large Open Plan Kitchen
- Large Feature Conservatory
- Leading to Landscaped Wheelchair accessible gardens and stocked feature pool



The first floor has a further four bedrooms and a second room available for those clients who require it.

- Newly refurbished bathroom, with shower bath
- One bedroom benefits from an en-suite facility

Service & Support

We will:

- Work in partnership with medical and social care professionals, attend meetings and support tenants.
- Work closely and transparently with families.
- Offer skilled, safe care for complex needs.
- Provide safe and secure administration of medication by fully trained staff.
- Enable and develop independent living skills to help tenants live a happier lifestyle.
- Encourage and support individuals to be inclusive in their community, meet friends and make new friends.
- Offer emotional support and encouragement.
- Support and encourage tenants to be independent in their local community.

We will provide:

- A Full time Manager on site to co-ordinate the delivery of tenants' individual plans, to support tenants and staff.
- 24hr, 7-day support staff support is already available in the house.
- Support for tenants to maintain their home and grounds.
- Other shared communal services will include – Fibre Broadband, Netflix and other pay TV, Well kept Gardens with various activities
- Tenant and Parent Meetings - To enable tenants to be involved in the planning and the development of their own home.

About Arreta Care Limited

Arreta Care are based in Hednesford and has a Director team of four extremely experienced and talented Care and Business Professionals, who between them have served 70+ years in the sector.

We started the Company because we felt large Care Companies were losing the personal client aspect to their service and we wanted to bring it back.



The Arreta Care team are able to provide a superior service as they are invested Financially, Professionally and Emotionally in the business and this, we believe gives Arreta Care a significant advantage, others do not have.



ArretaCare



All our staff have a Director mentor / assessor which allows us to offer first-class support and training to our staff. Client service ownership and our teamwork creates results to a very high level of customer satisfaction, which is delivered consistently

What will life be like at Morrell Place for a tenant?

Our House Manager Clare Porter explains :

- Your bedroom will be your own. You will be able to design and create your space to your own preference and taste.
- You will have your own key to your bedroom and the front door.
- You will have access to shared rooms at your leisure.
- Specially designed Sensory room on the ground floor.



Clare has 28 years experience working with Adults with learning disabilities



- You will receive support tailored to your own needs by trained experienced staff.
- You will be fully involved in your individual care plan and documentation.
- We will provide support to enable you to keep your house clean and tidy.
- We will support you to be part of your local community.

How much will it cost to live at Morrell Place?

**All bedrooms are charged at £95 per week (except room 1)
charged at £115 p/w**

Bedroom 1- en-suite , first floor, front aspect - Available

Bedroom 2 – first floor garden view - Not Available

Bedroom 3 – first floor front aspect - Available

Bedroom 4 - first floor garden view - Available

Bedroom 5 - suitable for a wheelchair user - Not available

The house operates utilises the Morrell Parent Group (MPG) to ensure service charges and utility costs are fully accountable.

Service & Utility which includes :- Energy bills, Water Rates, TV license, Home Insurance, Council Tax , Broadband, Garden Maintenance, Window Cleaning and Netflix. The charge also covers any items needed to be purchased, Consumables e.g. Light Bulbs, Garden Equipment and White Goods. etc

Each year this account is audited and the MPG and Landlord agree the charge for the following year or to spend any excess on house items or projects.

As a parent you will be invited to attend the MPG meetings if you wish.

Personal Care and support in accessing the community will be priced according to the tenants person-centred plans if they are using Arreta Care